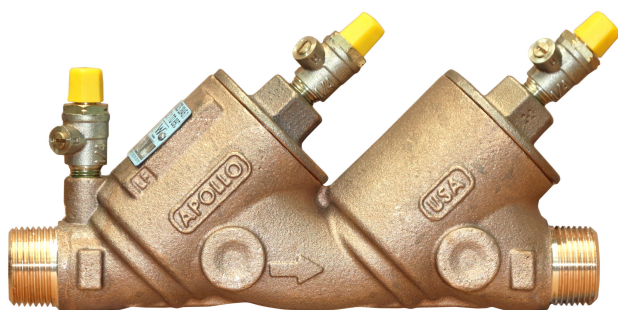


DCV Backflow Preventers 4A-100 SERIES



Sizes 15mm - 50mm



Job Name:	
Job Location:	
Engineer:	
Contactor:	
Tag:	
PO#:	
Rep:	
Wholesale Dist:	

TOP ENTRY DOUBLE CHECK VALVE ASSEMBLY LEAD FREE

The Apollo Series 4A-100 Double Check Valves are designed to prevent contamination of the potable water supply due to back-siphonage or backpressure from substances that are objectionable, but non-health hazards. The modular check valve captured spring cartridges have replaceable seats and reversible silicone seat discs.

OPERATION

During normal flow conditions, the two check valves are held off their seats, supplying water downstream. Each check valve is designed to maintain a minimum of 7 kPa across the valve during normal operation. Should the downstream pressure increase to within 7 kPa of supply pressure, both check valves will close to prevent a backflow condition.

FEATURES

- Low pressure loss
- Modular check valve cartridges with easily replaced parts
- Top access for fast testing and easy maintenance
- Testcock protectors
- Corrosion resistant
- No special tools required
- 5 year warranty
- Horizontal or vertical installation
- Designed, manufactured, assembled and tested in South Carolina, USA

PERFORMANCE RATING

- Maximum working pressure 1,200kPa
- Temperature range 1°C - 85°C

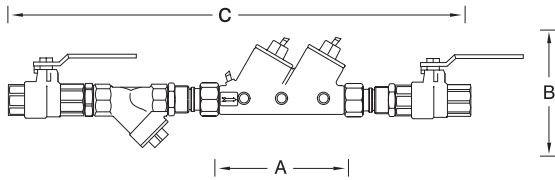
APPROVALS

- AS2845.1 Approved
- Watercare Approved

STANDARD MATERIALS LIST

Part Name	Material
Body, Caps	Bronze C89836 Lead Free
BV Shutoffs, Test Cocks	C8700 Lead Free
Check Valve Cartridges	Glass filed PPO
Springs	300 Series Stainless Steel
Seat Discs	Chloramine-resistant Silicone

Submittal Sheet

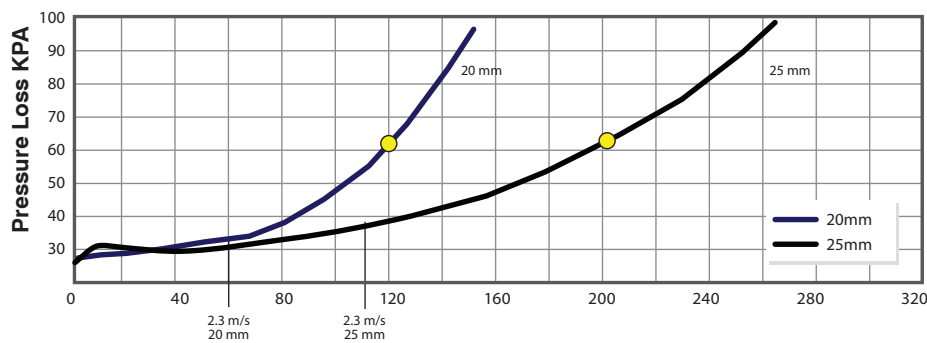


DIMENSIONS

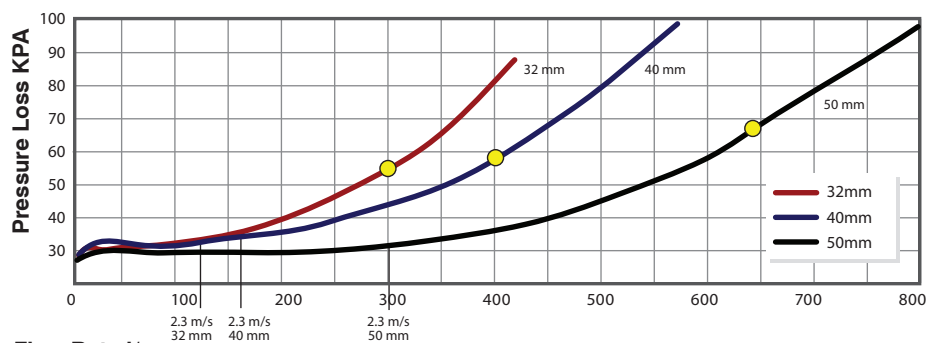
Complete Valve Code* Size	ADC15 15mm.	ADC20 20 mm.	ADC25 25mm.	ADC32 32 mm.	ADC40 40 mm.	ADC50 50 mm.
A (DCV device length)	216	216	241	298	298	324
B (Height)	139	139	170	184	195	235
C (Overall assembly length)	380	355	400	680	720	820
Width of assembly	65	65	70	82	82	92
Weights	kg.	kg.	kg.	kg.	kg.	kg.
Net Wt. (Device Only)	1.7	1.7	2.2	3.6	3.6	5.2

*COMPLETE WITH BALL VALVES, STRAINER AND NIPPLE

FLOW CURVES



Flow Rate l/m



Flow Rate l/m

PRODUCT CODES

Code	Description
ADC15	DCV 15mm Complete
ADC20	DCV 20mm Complete
ADC25	DCV 25mm Complete
ADC32	DCV 32mm Complete
ADC40	DCV 40mm Complete
ADC50	DCV 50mm Complete

Customer Services (09) 837 9330
www.aqualine.co.nz

This specification is provided for reference only. Aqualine Products Ltd. reserves the right to change any portion of this specification without notice and without incurring obligation to make such changes to Apollo products previously or subsequently sold. Please visit www.aqualine.co.nz for the most current information.

Apollo backflow supplied in New Zealand by

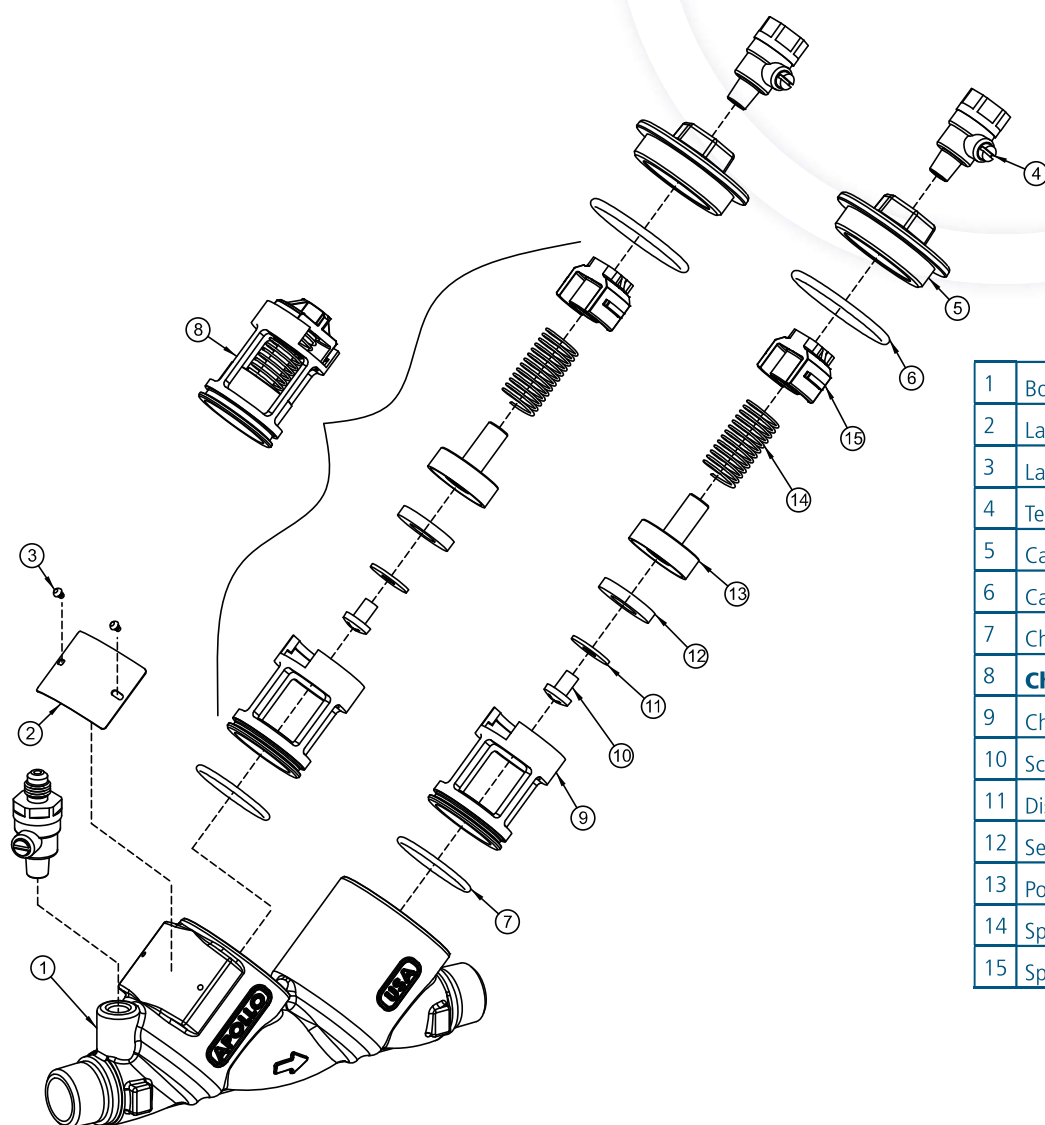


ADC 15mm - 50mm Repair Kits

4A-100 ADC APOLLO

4A-100 ADC APOLLO

Size	15mm	20mm	25mm	32-40mm	50mm
Check Rubber Repair Kit (x1) 6, 7, 11	ACVRK301	ACURK401	ACURK501	ACVRK701	ACURK801
Check Module Repair Kit 6, 7, 8	A2CRK302	A2CRK402	A2CRK502	A2CRK702	A2CRK802
Major Repair Kit 6 (2), 7 (2), 8 (2)	AMRK308	AMRK408	AMRK508	AMRK708	AMRK808



1	Body
2	Label Plate
3	Label Plate Tacks
4	Test Cock M x F
5	Cap
6	Cap O-Ring
7	Check Module O-Ring
8	Check Sub Assembly
9	Check Seat
10	Screw
11	Disc Retaining Washer
12	Seat Disc
13	Poppet
14	Spring
15	Spring Retainer

IAPMO OCEANIA

7-11 Fullard Road, Narre Warren, Victoria 3805, Australia /info@lapmooceania.org



IAPMO Oceania is a product certification body which inspects and arranges for the independent laboratory testing of samples taken from the manufacturer's stock or from the market or a combination of both, to verify compliance of the requirements of applicable Standards and Specifications. This activity is coupled with periodic surveillance of the manufacturer's factory and any major subcontractor's site/s as well as the assessment of the manufacturer's Quality Assurance System. This certification is subject to the conditions set forth in the characteristics below and is not to be construed as any recommendation, assurance or guarantee by IAPMO R&T Oceania of the product acceptance by Authorities Having Jurisdiction.

CERTIFICATE OF CONFORMITY

IAPMO Oceania hereby grants to:

Aalberts Integrated Piping Systems Americas, Inc. (DBA Conbraco Industries, Inc.)

1418 South Pearl Street, Pageland, SC 29728 United States

Email: customerservice@aalberts-ips.com

the right to use the WaterMark in accordance with the ABCB Manual for the WaterMark Certification Scheme;-- Australian Standards; WaterMark Technical Specifications; and the Plumbing Code of Australia; only in respect of the certified product as described in the WaterMark Certificate of Conformity - Schedule of Certified Product (Refer also IAPMO Product Listing Directory). The Certificate is granted subject to the rules governing the WaterMark Certification Scheme and the Terms and Conditions of the Approved User Agreement and IAPMO Oceania's WaterMark Governance Rules.

Evaluated to:

AS/NZS 2845.1-2010 (Inc. Amdt 1)

Water supply - Backflow prevention devices - Materials, design and performance requirements

Manufacturer:

Refer to Licence Holder

Licence No.: WM-022183

First Certified: 05 Jul 2013

Certification Date: 05 Jul 2024

Expiry Date: 04 Jul 2029

David Viola
Chief Executive Officer of the IAPMO Group

This WaterMark certification is for the period indicated herein and is void after the date shown above. Any change in material, manufacturing process, marking or design without having first obtained the approval of IAPMO Oceania, or any evidence of non-compliance with applicable Standards, Specifications or of inferior workmanship, may be deemed sufficient cause for revocation of this certification. Reproduction of or reference to this certificate for advertising purposes may be made only by specific written permission of IAPMO Oceania. Any alteration of this certificate could be grounds for revocation of this certification.

"This certificate is issued by a JAS-ANZ accredited Conformity Assessment Body. The ABCB and JAS-ANZ do not in any way warrant, guarantee or represent that the product the subject of this Certificate conforms to the WaterMark Certification Scheme Rules, nor accepts any liability arising out of the use of the product. The ABCB disclaims to the extent permitted by law, all liability (including negligence) for claims of losses, expenses, damages and costs arising as a result of the use of the product(s) referred to in this Certificate."